



LNC Safe Schools Special Report



February 16, 2022



New Information

- On February 10th, [NC Department of Health and Human Services announced several changes the NC SafeSchools Toolkit which will be effective on Feb. 21st.](#) Those changes include:
 - Contract tracing no longer recommended due to incubation and virulence of recent strains of COVID
 - No longer automatically recommend or require North Carolina public schools to keep students and employees out of classrooms if they've had suspected exposure to COVID-19
 - Quarantine will continue to be required for any person who tests positive for coronavirus or who has symptoms

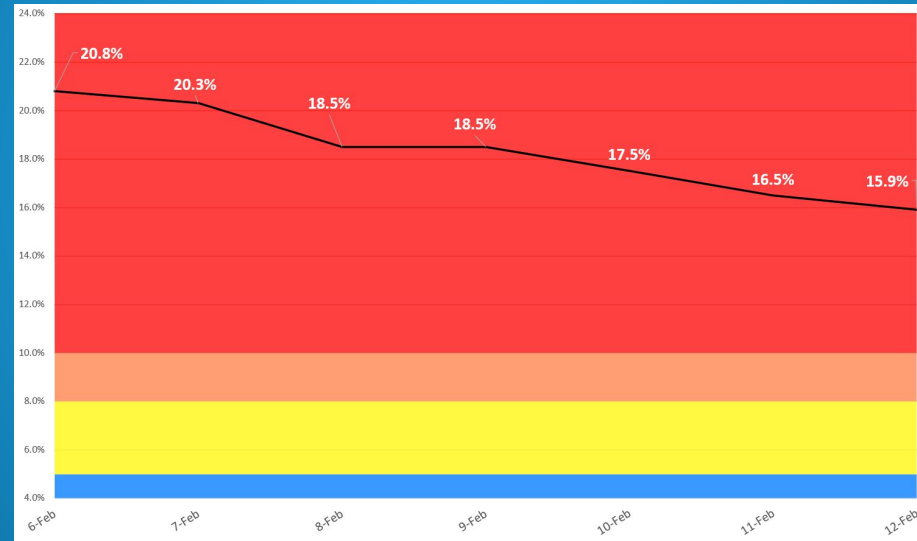
New Information

- Impact on school absences will be significantly reduced given the adjusted exposure guidelines
- Due to a precipitous drop in COVID infection rates, it is expected that Mecklenburg Dept of Health and Human Services will be recommending on Feb. 16th to discontinue the County mask mandate.
- All school aged children have had time to now be fully vaccinated
- LNC has ample COVID tests available for diagnostic testing

Health Metrics

Current Local Trends

- Percent positive is reported daily and has decreased from 20.8% to 15.9% for the week ending 2/12/22



- The CDC county map reporting has Mecklenburg County in the red as of 2/14/22

LNC Data Dashboard

Current Week Covid-19 Cases & Exposures 2021-2022 School Year

The following data:

- Includes both LNC faculty and students
- Is reported to the Mecklenburg County Department of Health, whom LNC works with to conduct contact tracing
- Will be updated weekly on Wednesday
- Includes data from FEBRUARY 7, 2022 - FEBRUARY 13, 2022

Posted Wednesday, FEBRUARY 16, 2022

Campus Location	Number of Cases (confirmed or presumptive)	Number of Exposures
Elementary School	7	1
Middle School	1	0
High School	2	0

To report a positive case of Covid or an exposure to Covid, contact Rebecca Shipman at rshipman@LNCharter.org or at 704-948-8600 extension 1200. Calls are monitored 7 days a week from 8am until 8pm.



- Despite changes in contract tracing, LNC will still update weekly the Covid-19 Dashboard (every Wednesday)

Recommendation

- The Safe Schools committee met on Monday, February 14th. After reviewing the updated recommendations, (and contingent on the expected discontinuation to the masking mandate in Mecklenburg County) the committee recommends that **starting February 22nd** that masking becomes optional for students, staff and visitors.
- LNC will still keep a dashboard that will be posted on our website which document positive cases & reported exposures.

Why the change?

- Contact tracing deemed to be ineffective due to the virulent nature of Omicron and quick incubation period
 - Omicron makes up 99% of infection
- Universal masking not as effective with Omicron unless KN-95 or above

NYT Article: [The C.D.C. concedes that cloth masks do not protect against the virus as effectively as other masks](#)

- All staff/students have availability to increased protection from the virus through vaccination
- Mandatory quarantine of exposed individuals has been eliminated due to updated Toolkit guidance

Why the change?

- We have been monitoring several other schools which have had good safety protocols in place, but went mask optional to determine impact. Those schools have not seen disproportional infection rates or school clusters that have impacted operations.
- LNC's primary goal has been to ensure staff/student safety and in-person learning. The new guidance allows us to support that goal while providing families choice based on their circumstances.

Continued Layered Mitigation Strategies

- High quality ventilation in classrooms and most common areas
- Vaccinations available to all members of our school community
- Access to hygiene product/procedures
 - hand washing, sanitizer, etc.
- Routine cleaning/disinfection protocols
 - Increased daily cleaning staff
 - Regular electrostatic sanitation of classrooms
 - Classroom desk/surface sanitizer (Sani-Q)
- On-site school rapid COVID testing & support (Ms. Shipman/Nurse Denise)
- Masking (N-95 masks available for staff) for those who choose

Appendix:

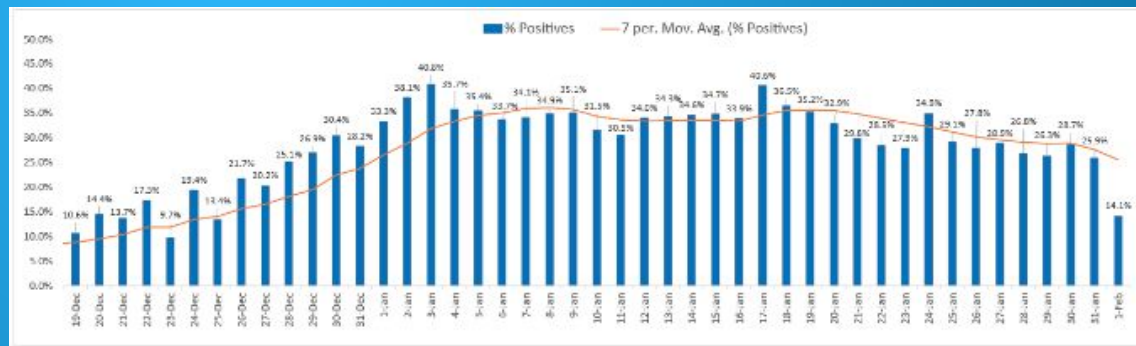
Local Metrics

As of 2/1/22

Daily Covid-19 Reported Cases



Daily Percent Positive of Laboratory Covid-19 Tests

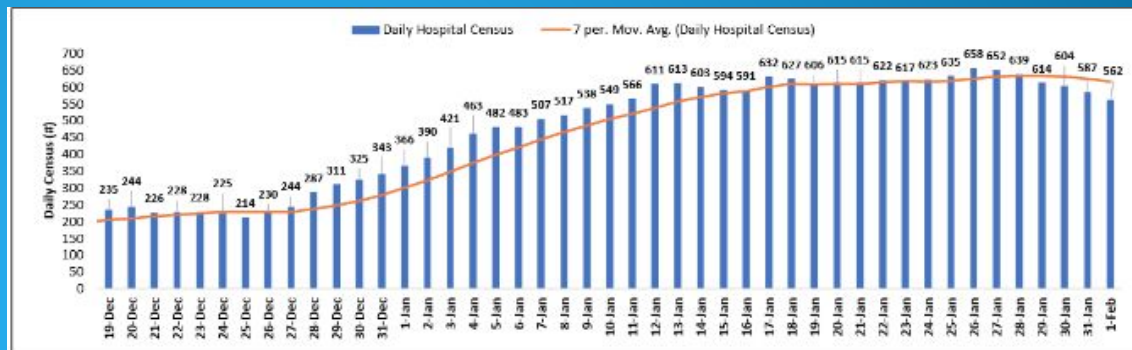


Appendix:

Local Metrics

(Continued)

Daily Hospital Census of Patients with Laboratory Confirmed Covid-19

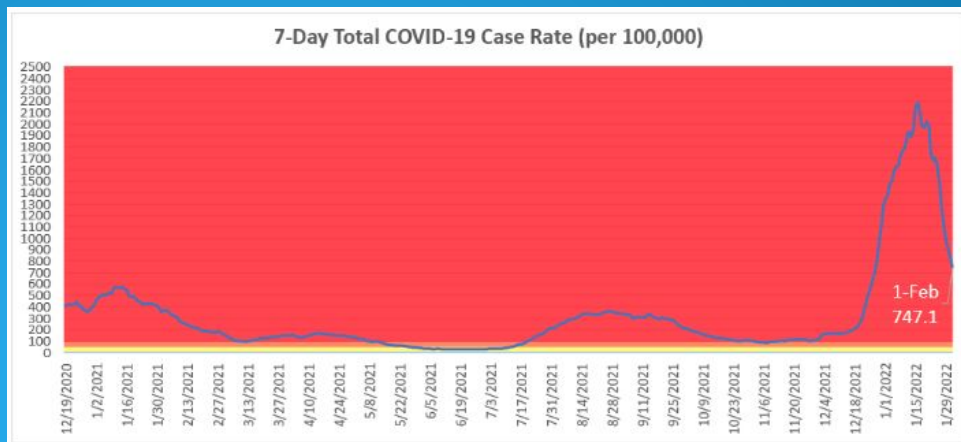


Graph represents daily census for patients at Atrium and Novant Health including a 7 day moving average

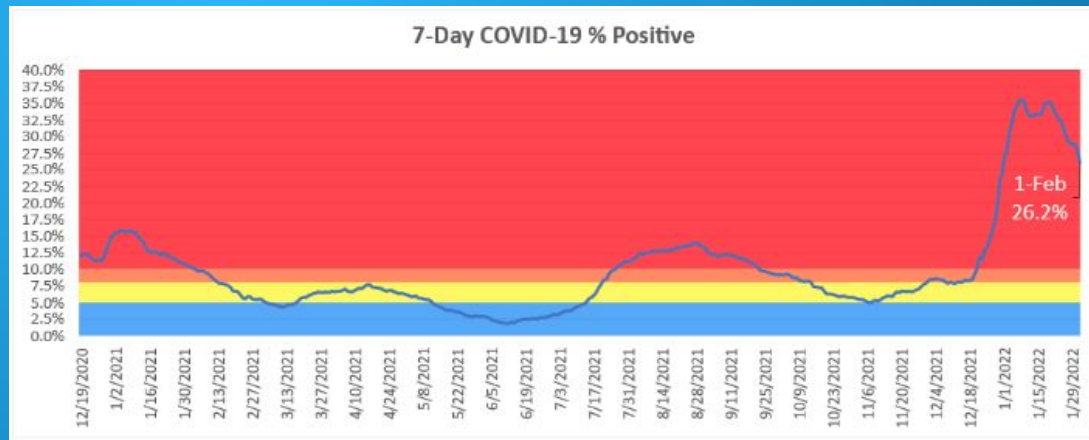
Appendix:

Local Metrics (Continued)

Covid-19 Case Rate per 100,000 Residents (7 day average)



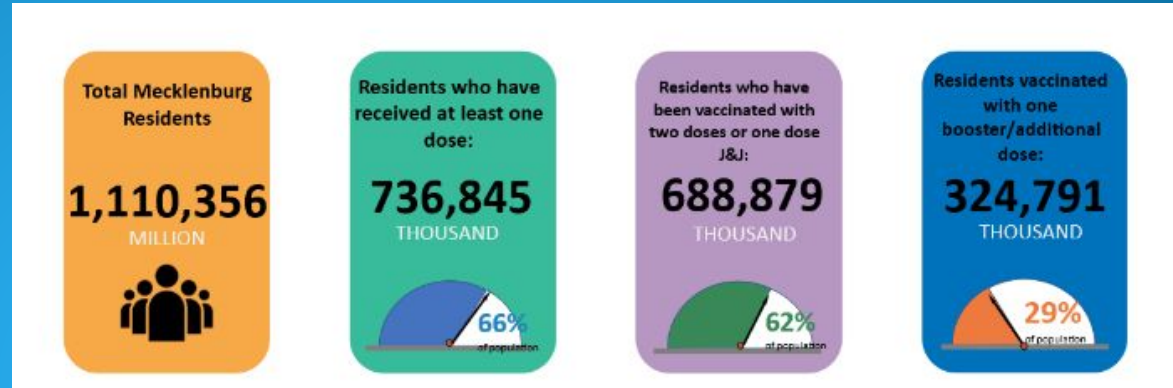
Covid-19 Percent Positivity Rates (7 day average)



Appendix:

Mecklenburg County Vaccinations

Total County Vaccination Rate



Vaccination rate
by age with at
least one dose

