



LNC Safe Schools Special Report



January 13, 2022



New Information

- The Omicron COVID variant has shown to spread very quickly, especially with the holiday travel.
- CDC changed recommendations for quarantine length for both infected and exposed individuals. Subsequently, the NCDHHS also changed the SafeSchools Toolkit to mirror the recommendations.
 - Notably, quarantine length has been shortened to 5 days for both infected and exposed individuals
 - Exposed and vaccinated (18+ booster necessary)-**NO quarantine** from school

New Information

- The FDA & CDC has approved booster shots for students 12 years old and up.
- High demand for testing continues which has led to difficulty in finding appointments. LNC still has tests available for staff/students, but the state has shared they have limited supply
- The Supreme Court decided on 1/13/22 that OSHA could no longer enforce a mandate that required employees of companies or schools with over 100 employees to either be vaccinated or test weekly

Health Metrics

(as of 1/4/2022)

Current Local Trends

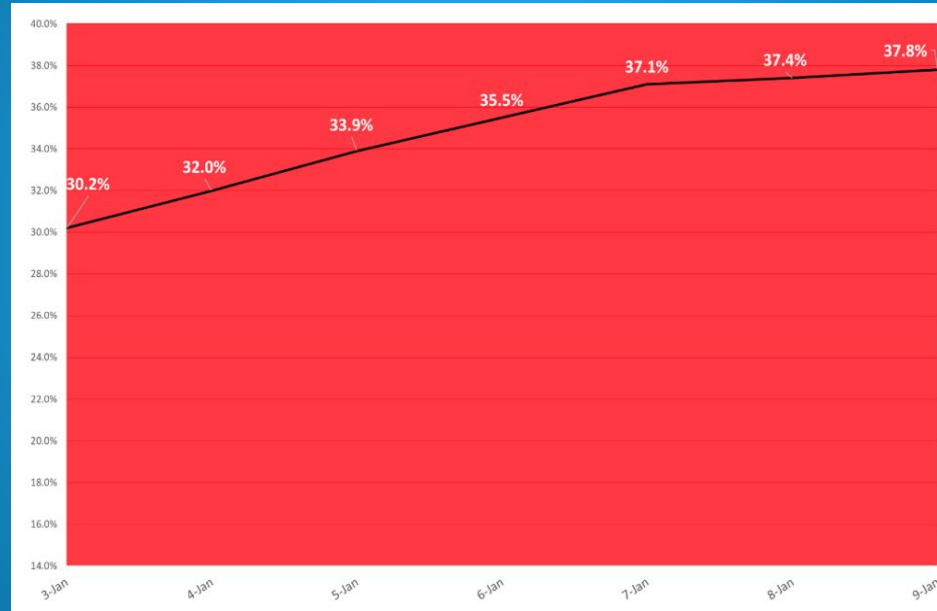
- Mecklenburg County is still currently under an indoor mask mandate.
- Last full data update for the county was on 1/4/22 and % positive is still reported daily (with a 2 day lag)
- All county metrics represent a rapid increase over the last 14 days.
- Daily new COVID cases had a 7 day moving average of 2,315 compared to 174 on 11/30
- Over the past 7 days, on average 374 people were hospitalized with COVID-19 infections at acute care facilities compared to 155 on 11/30.

Health Metrics

(as of 1/9/2022)

Current Local Trends

- Percent positive was between 30.2% and 37.8% for the week ending 1/9/22



- The CDC county map reporting has Mecklenburg County in the Red as of 1/12/22

Health Metrics

(as of 1/4/22)

Current Local Trends

- As of 1/4/22, approximately 65% of the total population of Mecklenburg County is partially vaccinated with 61% being fully vaccinated and 47% receiving the booster; 58% of 12-17 year olds and 28% of 5-11 year olds in Meck Co. are partially vaccinated.

LNC Data Dashboard

Current Week Covid-19 Cases & Exposures 2021-2022 School Year

The following data:

- Includes both LNC faculty and students
- Is reported to the Mecklenburg County Department of Health, whom LNC works with to conduct contact tracing
- Will be updated weekly on Wednesday
- Includes data from JANUARY 3, 2022 - JANUARY 9, 2022

Posted Wednesday, January 11, 2021

Campus Location	Number of Cases (confirmed or presumptive)	Number of Exposures
Elementary School	14	15
Middle School	18	14
High School	35	8

To report a positive case of Covid or an exposure to Covid, contact Rebecca Shipman at rshipman@LNCharter.org or at 704-948-8600 extension 1200. Calls are monitored 7 days a week from 8am until 8pm.



- The Covid-19 Dashboard is updated weekly (on Wednesdays) and can be found on the LNC website

Recommendation

- Given the current data, continued mandatory masking while indoors is recommended for all students, staff and visitors.



Appendix:

Local Metrics

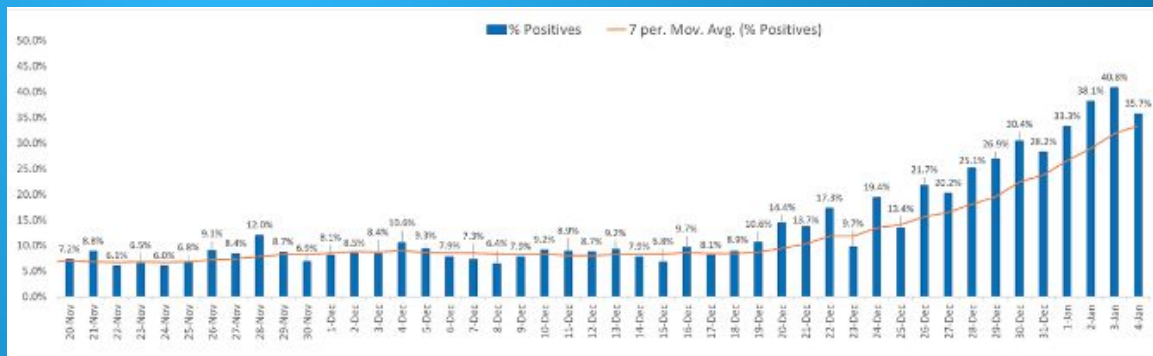
As of 1/4/22

Daily Covid-19 Reported Cases



Graph represents total laboratory confirmed cases in Mecklenburg County as well as 7 day moving average

Daily Percent Positive of Laboratory Covid-19 Tests



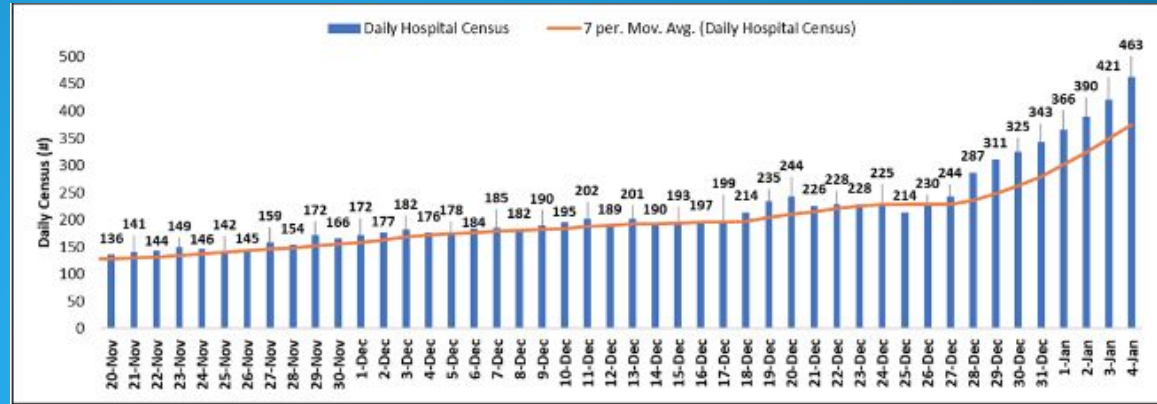
Graph represents the percentage of tests that are positive over total number of tests performed including the 7 day moving average

Appendix:

Local Metrics

(Continued)

Daily Hospital Census of Patients with Laboratory Confirmed Covid-19



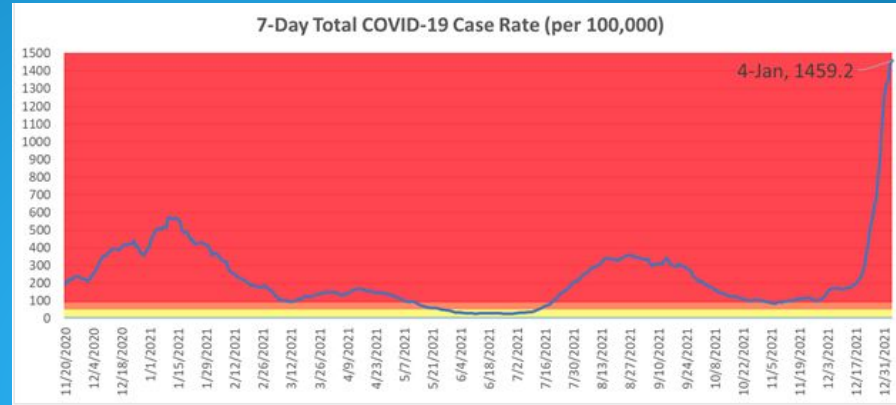
Graph represents daily census for patients at Atrium and Novant Health including a 7 day moving average

Appendix:

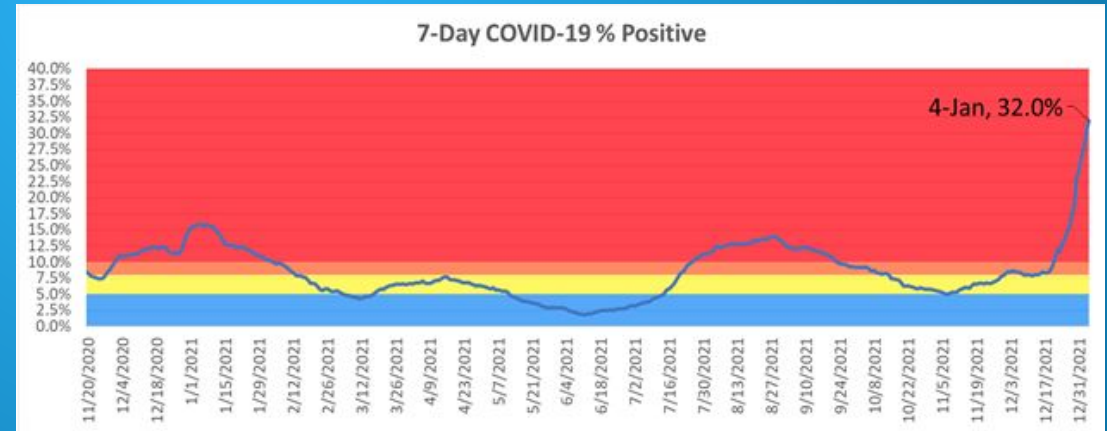
Local Metrics (Continued)

As of 12/31/21

Covid-19 Case Rate per 100,000 Residents (7 day average)



Covid-19 Percent Positivity Rates (7 day average)

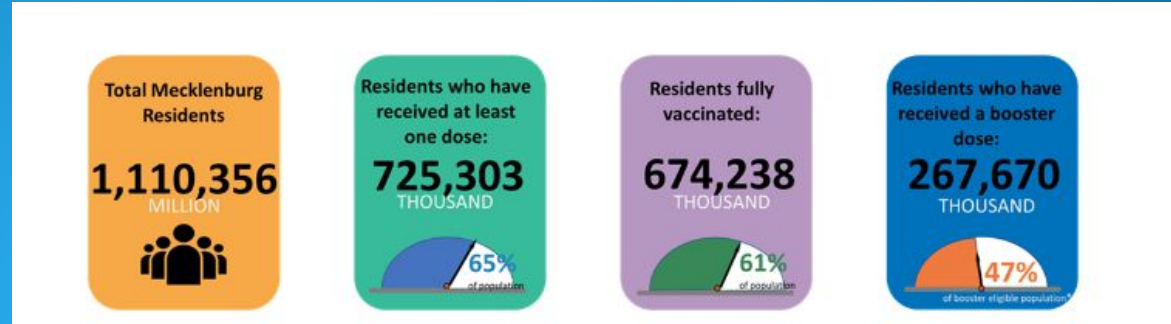


Appendix:

Mecklenburg County Vaccinations

Data as of 1/4/22

Total County Vaccination Rate



Vaccination rate by age with at least one dose

